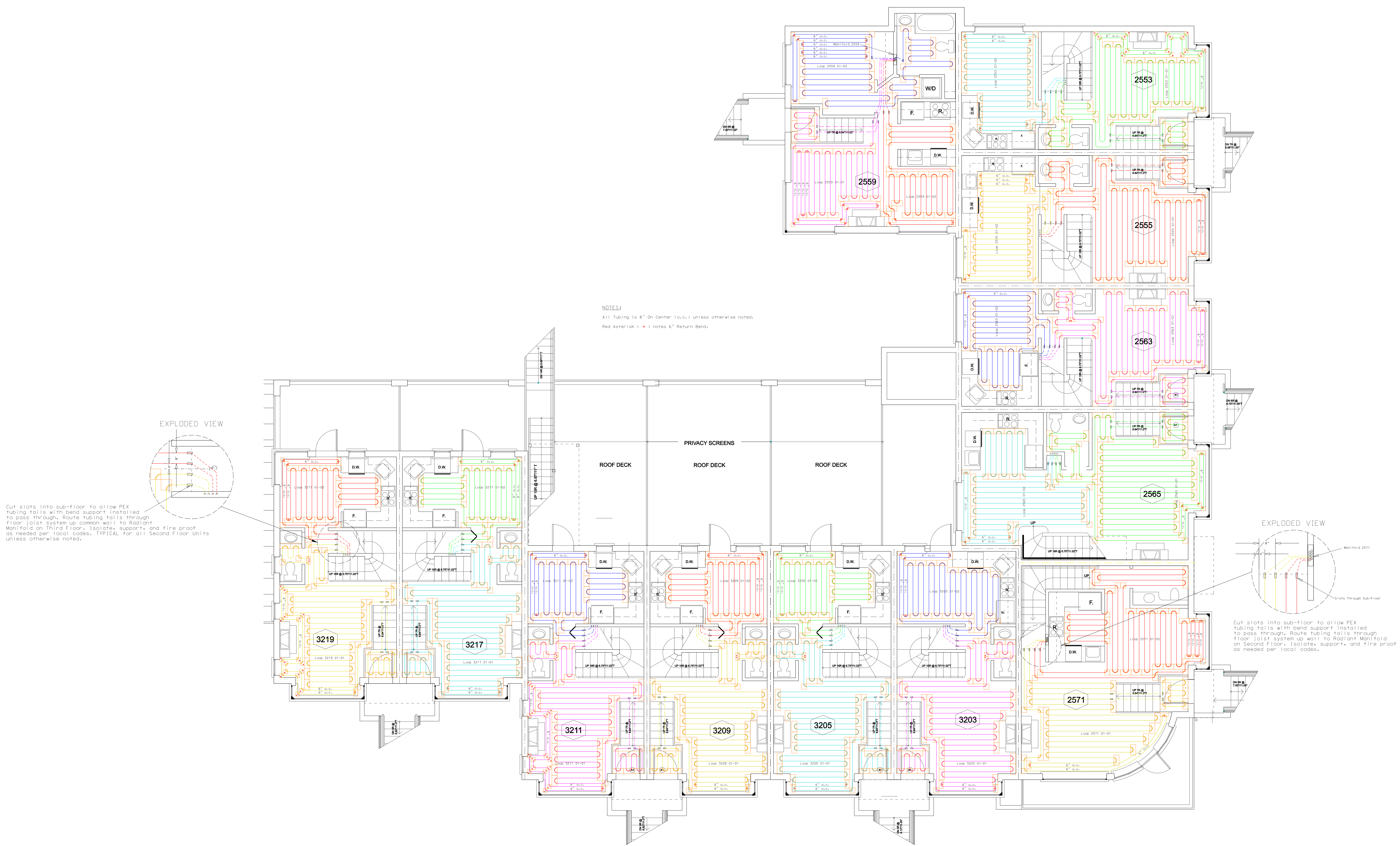
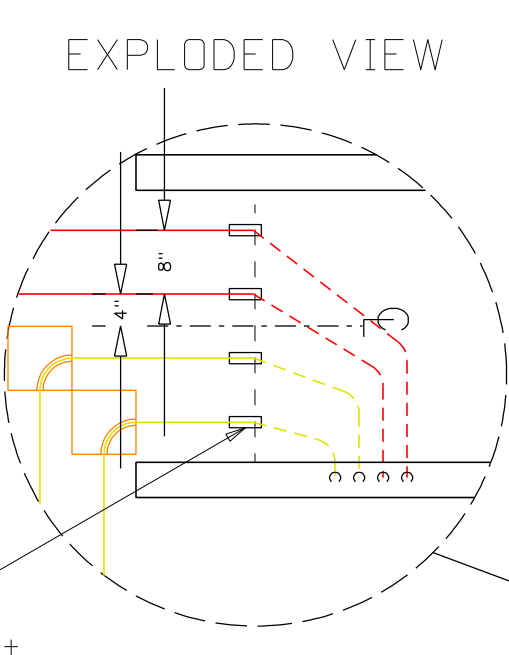


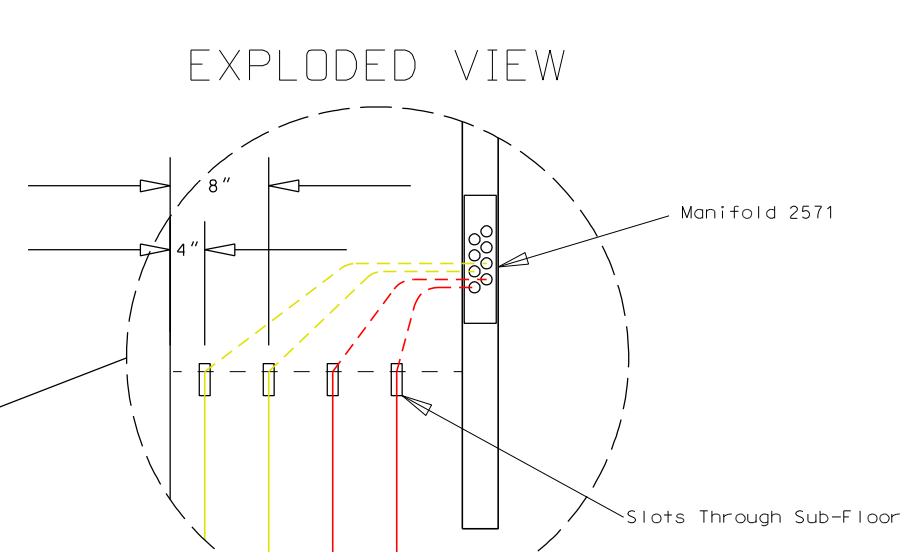
Townhouse Development
 ThermoFin U Tubing Layout
 Second Floor



NOTES:
 All Tubing is 8" On Center (o.c.) unless otherwise noted.
 Red Asterisk (*) notes 6" Return Bend.



Cut slots into sub-floor to allow PEX tubing tails with bend support installed to pass through. Route tubing tails through floor joist system up common wall to Radiant Manifold on Third Floor. Isolate, support, and fire proof as needed per local codes. TYPICAL for all Second Floor Units unless otherwise noted.



Cut slots into sub-floor to allow PEX tubing tails with bend support installed to pass through. Route tubing tails through floor joist system up wall to Radiant Manifold on Second Floor. Isolate, support, and fire proof as needed per local codes.